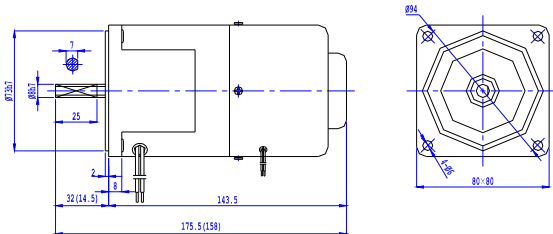


Motor Overall Dimension :



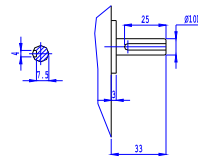
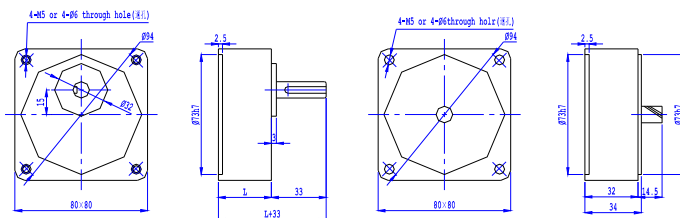
* The value in the () is the value of small gear shaft motor

List of Motor Characteristics

Model of Motor & Gearbox		Output Power (W)	Rated Voltage (V)	Rated Freq'y (Hz)	No. of Poles (P)	Duty Cycle	Speed (r/min)	Allowable Torque				Starting Torque		Capacitor /Voltage (μF/VAC)
Motor Only	Motor with Gear Shaft							1200r/min (N.m)	1200r/min (kgf.cm)	90r/min (N.m)	90r/min (kgf.cm)	(N.m)	(kgf.cm)	
4RK25RA-AM	4RK25RGN-AM	25	1Ph 110	50	4	30Min	90~1350	0.20	2.00	0.05	0.50	0.18	1.80	8.0/250
4RK25RA-CM	4RK25RGN-CM	25	1Ph 220	50	4	30Min	90~1350	0.20	2.00	0.05	0.50	0.18	1.80	2.2/450

If the voltage is different, the capacitor's capacity will also be different. A suitable capacitor is required to match the applied voltage. Wrong of the motor or components is the main reason to cause problem. So before order, please specify the correct voltage & select the suitable model(s).

Overall Dimension of Gearbox



Detailed dimensions of gearbox output spindle

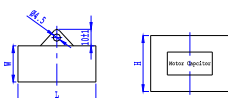
	Gear Ratio	Length L (mm)	G.W. (Kgs)
Gearbox	1:3 ~ 1:18	32	0.43
	1:20 ~ 1:50	43.5	0.57
	1:60 ~ 1:200		0.61
Intermediate Gearbox	4GN-10X	32	0.43
Motor			2.05

Allowable Torque on Gearbox

Model of Gearbox: 4GN K □

Freq'y	Gear Ratio		3	3.6	5	6	7.5	9	10	12.5	15	18	20	25	30	36	40	50	60	75	90	100	120	150	180	200
			Output Speed	RPM	500	417	300	250	200	166	150	120	100	83	75	60	50	41	37	30	25	20	16	15	12	10
50Hz	Permitted	N.m	0.52	0.63	0.87	1.05	1.31	1.57	1.74	2.19	2.62	3.15	3.15	3.94	4.72	5.66	6.29	7.12	7.84	7.84	7.84	7.84	7.84	7.84	7.84	7.84
		Torque	kgf.cm	5.3	6.4	8.9	10.7	13.4	16.0	17.8	22.3	26.7	32.1	32.1	40.2	48.2	57.8	64.2	72.6	80.0	80.0	80.0	80.0	80.0	80.0	80.0
60Hz	Permitted	N.m	0.43	0.51	0.72	0.85	1.07	1.28	1.43	1.78	2.15	2.57	2.58	3.22	3.86	4.64	5.16	5.82	6.99	7.84	7.84	7.84	7.84	7.84	7.84	7.84
		Torque	kgf.cm	4.4	5.2	7.3	8.7	10.9	13.1	14.6	18.2	21.9	26.2	26.3	32.9	39.4	47.3	52.6	59.4	71.3	80.0	80.0	80.0	80.0	80.0	80.0

Capacitor



Capacity (μF)	Voltage	Lt1	Wt1	Ht1	Type
		mm	mm	mm	
2.2	450	38	18	28	With
8.0	250	47	26	38	Lead Wire

Induction Motor