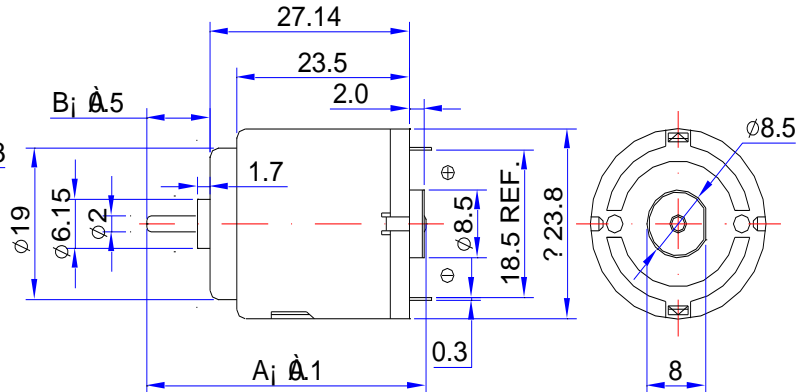
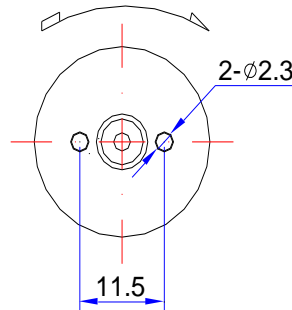




Typical Application:

1. Motorized Toys
2. Mini Hair Dryer

DIRECTION OF ROTATION



Weight: 28g (Approx.)

SHAFT LENGTH(A) : 38.0 42.0 45.0
SHAFT EXTENSION(B): 8.0 12.0 15.0

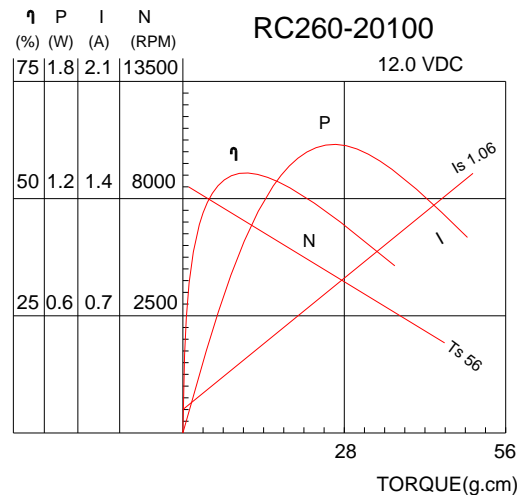
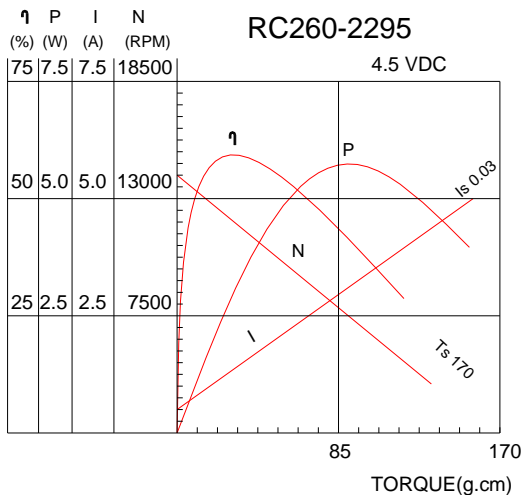
(mm)

METAL BRUSH AND CARBON BRUSH MOTORS, FLAT TYPES AND ROUND TYPES ARE ALL AVAILABLE.

ELECTRICAL SPECIFICATION CHART: (The following specifications can be changed as customers' requirement)

Model	Voltage		At No Load		At Max Efficiency				Stall Torque	
	Workable Range	Nominal	Speed	Current	Speed	Current	Torque	Output		Eff.
			RPM	A	RRPM	A	G.CM	W		%
RC260-08500	1.5~12.0	12.0V CONSTANT	7200	0.13	7,600	0.50	12.00	0.93	62.3	57
RC260-2295	3.0~6.0	4.8V CONSTANT	10800	0.17	8900	0.85	15.00	1.18	49.6	72
		6.0V CONSTANT	13500	0.18	11300	0.97	16.00	1.79	46.6	86
RC260-20100	1.5~12.0	12 V CONSTANT	9600	0.30	15,100	1.43	21.00	3.25	50.5	125

CHARACTERISTIC CURVES:



Shenzhen Nostop Electric Co., Ltd

Building C#, Gangzhilong Science & Technology Industrial Park, Qinglong Road, Longhua Town,
Shenzhen City, Guangdong Province, 518107 P.R.China

TEL: +86.755. 2983 4766, 2815 9775, 2815 9776 FAX: +86.755. 2967 4299

E-mail: stony@nostop.cn

URL: <http://www.nostopmotor.com>, <http://www.nostop.cn>