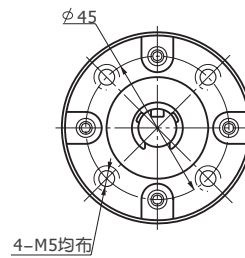
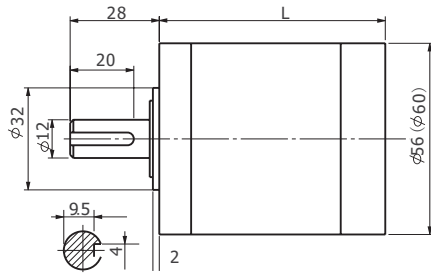


内齿圈材料	Housing material	金属 Metal
输出轴承形式	Bearing at output	滚动轴承 Sleeve bearings
径向负载 Radial load (10mm from flange)		≤200N
轴向负载	Shaft axial load	≤100N
径向间隙	Radial play of shaft	≤0.04 mm
轴向间隙	Thrust play of shaft	≤0.3 mm
背隙 (无负载时) Backlash, at no-load		≤3°
输出轴最大承受压入力 Shaft press fit force, max		≤300 N

行星齿轮减速器 PLANETARY GEAR HEAD

56JX300K 60JX300K

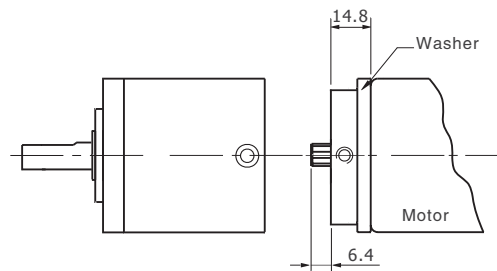
外形和安装尺寸 Dimensions



电机轴齿轮型式 Pinion Specifications

模数 Module	1.0	
齿数 No. of teeth	12	15
压力角 Pressure angle	20°	
孔径 Hole diameter	Φ6.01	
减速比 Reduction ratio	1/4.3 1/18 1/77 1/326	1/3.6 1/13 1/15 1/47 1/55 1/65 1/168 1/198 1/234 1/276

电机轴齿轮装配 Motor Installation



标准减速比型式 Motor Installation

减速比 Reduction ratio	实际减速比 Exact reduction ratio	额定允许负载 Rated tolerance torque	瞬间允许负载 Max momentary tolerance torque	效率 Efficiency	L (mm)	重量 Weight(g)
1/3.6 1/4.3	1/3.6 1/4.25	1.5 N.m	4.5 N.m	90 %	52.0±0.5	660
1/13 1/15 1/18	1/12.96 1/15.30 1/18.06	5 N.m	15 N.m	81 %	52.0±0.5	745
1/47 1/55 1/65 1/77	1/46.66 1/55.08 1/65.03 1/76.77	10 N.m	30 N.m	73 %	63.5±0.5	922
1/168 1/198 1/234 1/276 1/326	1/167.96 1/198.29 1/234.09 1/276.36 1/326.25	15 N.m	45 N.m	66 %	74.5±0.5	1098
1/168 1/198 1/234 1/276 1/326	1/167.96 1/198.29 1/234.09 1/276.36 1/326.25	30 N.m	90 N.m	66 %	83.0±0.5	1277

使用相对湿度: 20%~85%RH 使用相对温度: -10℃~+80℃
行星齿轮材料: (1) 树脂DOPUNT DELRIN 100P; (2) 钢
输入与输出的旋转方向: 同向
额定允许负载300N.m的是“重型减速器”, 订货时应说明
减速器直径可制造为Φ56或Φ60, 订货时应说明
推荐电动机最大输入转速: < 3000rpm