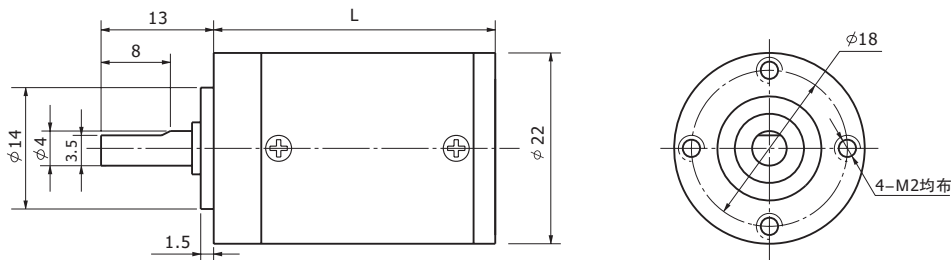


内齿圈材料	Housing material	金属 Metal
输出轴承形式	Bearing at output	滚动轴承 Sleeve bearings
径向负载 Radial load (10mm from flange)		≤ 10N
轴向负载	Shaft axial load	≤ 6N
径向间隙	Radial play of shaft	≤ 0.04 mm
轴向间隙	Thrust play of shaft	≤ 0.3 mm
背隙 (无负载时) Backlash, at no-load		≤ 3°
输出轴最大承受压入力 Shaft press fit force, max		≤ 50N

行星齿轮减速器 PLANETARY GEAR HEAD

22JX5K

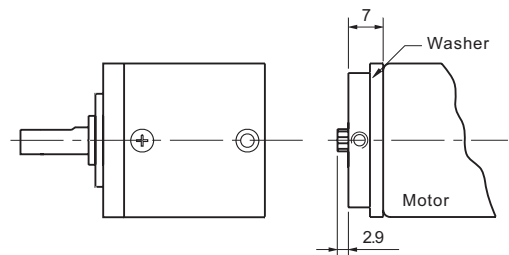
外形和安装尺寸 Dimensions



电机轴齿轮型式 Pinion Specifications

模数 Module	0.4	
齿数 No. of teeth	11	17
压力角 Pressure angle	20°	
孔径 Hole diameter	常规 φ2.02 可提供 φ2.32	
减速比 Reduction ratio	1/5.2 1/27 1/139 1/720 1/3730	1/3.7 1/14 1/19 1/51 1/71 1/100 1/189 1/264 1/369 1/516 1/981 1/1370 1/1913 1/2671

电机轴齿轮装配 Motor Installation



标准减速比型式 Motor Installation

减速比 Reduction ratio	实际减速比 Exact reduction ratio	额定允许负载 Rated tolerance torque	瞬间允许负载 Max momentary tolerance torque	效率 Efficiency	L (mm)	重量 Weight(g)
1/3.7 1/5.2	1/3.71 1/5.18	0.1N.m	0.3 N.m	90 %	26.0±0.5	30
1/14 1/19 1/27	1/13.76 1/19.22 1/26.83	0.2 N.m	0.6 N.m	81 %	28.0±0.5	34
1/51 1/71 1/100 1/139	1/51.06 1/71.30 1/99.55 1/138.99	0.3 N.m	0.9 N.m	73 %	32.5±0.5	42
1/189 1/264 1/369 1/516 1/720	1/189.45 1/264.52 1/369.32 1/515.66 1/719.98	0.4 N.m	1.2 N.m	66 %	37.5±0.5	45
1/981 1/1370 1/1913 1/2671 1/3730	1/981.35 1/1370.2 1/1913.1 1/2671.1 1/3729.5	0.5 N.m	1.5 N.m	59 %	42.0±0.5	50

使用相对湿度: 20%~85%RH 使用相对温度: -10℃~+80℃

行星齿轮材料:

(1) 树脂DOPUNT DELRIN 100P

(2) 钢

输入与输出的旋转方向: 同向

推荐电动机最大输入转速: <5000rpm