



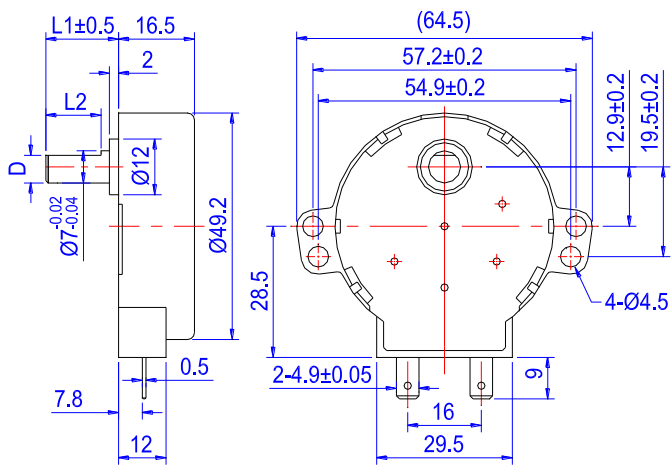
Features:

1. Shaft diameter is: $\varnothing 7.0\text{mm}$. Shaft length and shape can be any as needed.
2. Free running (sometimes in CW direction, sometimes in CCW direction. It is decided by the motor itself).
3. Low lifetime, low noise, Stable performance.
4. CE, UL, TUV approved.

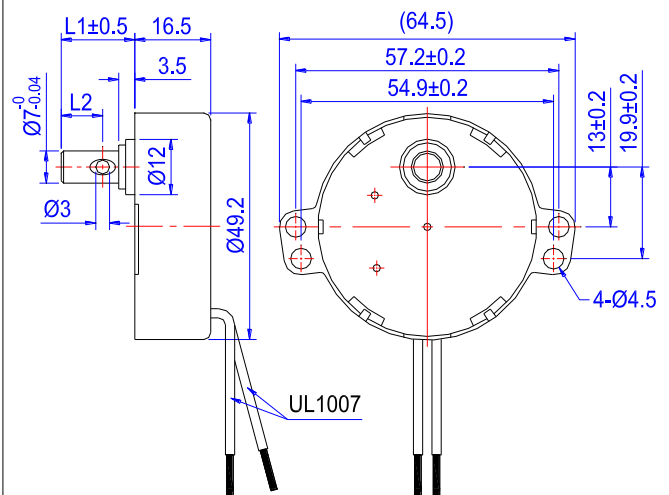
Main Applications:

Mainly used for Air-conditioner (turning leaf), or Micro-wave Turning Plate. It can also be used for electric fan, quartz heater, turning TV antenna, stage turning lamp, turning electric table, turning electric model, turning electric advertisement, turning goods shelves, dish washer, etc which needs low speed turning for long life and low noise.

Outline Dimensions :



Model: NSD5017T (power connection by terminals)



Model: NSD5017L (power connection by lead wire)

Performances of the Motor after Gear Reduction (@ 50Hz) :

General Specifications:

1. Rated Voltage : 220 - 240 (can be any value during the range of 12 – 240 VAC).
2. Rated Frequency : 50Hz, 60Hz or 50/60Hz both.
3. Rated Input Power : ≤ 4.0 Watts
4. Rated Input Current : $\leq 20\text{mA}$
5. Noise Level : $\leq 45\text{dB(A)}$
6. Temperature Rise (ΔT) : $\leq 65\text{K}$
7. Direction of Rotation : CW or CCW (controlled by different connection method of the capacitor).
8. Speed v.s. Torque : see as following chart.

Speed	@ 50Hz	rpm	2.0	2.5	3.0	4.0	5.0	7.0	10
	@ 60Hz	rpm	2.4	3.0	3.6	4.8	6.0	8.4	12
Torque	@ 50Hz	Kg.cm	8.00	7.00	6.00	4.00	3.50	2.00	1.00
		N.cm	0.82	0.71	0.61	0.41	0.36	0.20	0.10
	@ 60Hz	Kg.cm	6.67	5.83	5.00	3.33	2.92	1.67	0.83
		N.cm	0.68	0.60	0.51	0.34	0.30	0.17	0.09

Remarks:

The above torque values refer to the minimum torque values. Torque is the most important feature of a synchronous geared motor.